

For Immediate Release  
October 20, 2022

# SUSQUEHANNA ART MUSEUM

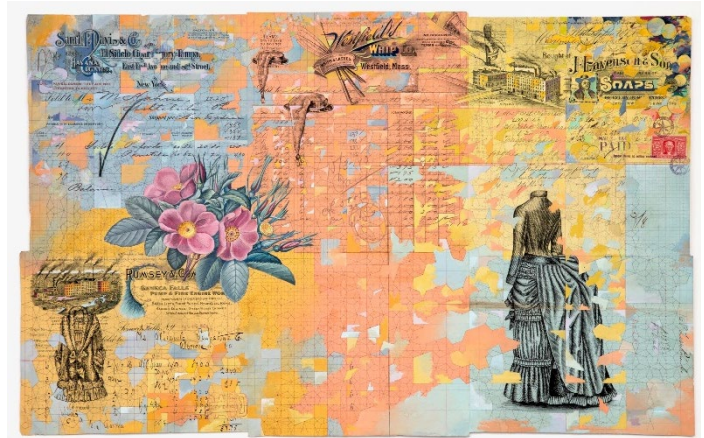
AT THE MARTY AND TOM PHILIPS FAMILY ART CENTER

## **LIES & REDACTIONS OFFERS A NEW VISION AT SAM**

**Harrisburg, PA** – *Lies and Redactions: A Survey*, Susquehanna Art Museum's newest exhibition, features work by Doug Navarra from 2006–2021. Spanning numerous distinct series in Navarra's career, this extended investigation of mark-making has evolved to include historic found documents, bold minimalistic redactions, and layered geometric patterns.

Early pieces on view highlight Navarra's integration of found documents into his drawing and painting practice. *"When my personal history as a 21st century artist is added to a 150-year-old piece of paper, it transforms the context of the page from a minor historical record into a contemporary and self-expressive work of art."*

The progression of the found document pieces demonstrates the artist's ability to work collaboratively with the past by navigating the marks already found on the documents themselves. Navarra's recent work shifts away from the inclusion of historic documents and highlights the possibilities of abstraction using redaction marks. Rather than adding to historic works, the artist is abstracting a surface by removing it from view.



Doug Navarra, *Untitled*, 2015, gouache, ink, pencil, and found paper

*Lies & Redactions* is on view in the Susquehanna Art Museum Lobby Gallery from October 20, 2022 through January 8, 2023. Find more information at [SusquehannaArtMuseum.org/calendar/Lies-Redactions](https://SusquehannaArtMuseum.org/calendar/Lies-Redactions)

Doug Navarra lives and works in the Northeastern United States and has exhibited his work across the country at museums, galleries, and universities. He has been awarded a New York Foundation for the Arts fellowship, a Fulbright-Hays Fellowship, and is a three-time awardee of the prestigious Pollock-Krasner Fellowship. His work is in the collections of the Brooklyn Museum of Art, Los Angeles County Art Museum, Museum of Arts and Design, and Rutgers University.

Susquehanna Art Museum is located at 1401 N. 3rd Street, Harrisburg, PA 17102.  
Hours: Wednesday 10am – 7pm, Thursday – Saturday 10am – 5pm, Sunday 12 – 5pm.  
Free parking is available to visitors in the lot behind the Museum at Calder and James Streets.

[www.SusquehannaArtMuseum.org](http://www.SusquehannaArtMuseum.org) (717) 233-8668

**Contact:** Lauren Nye, Director of Exhibitions, [LNye@SusquehannaArtMuseum.org](mailto:LNye@SusquehannaArtMuseum.org)  
**Facebook & Instagram:** Susquehanna Art Museum **Twitter:** @SusquehannaArt